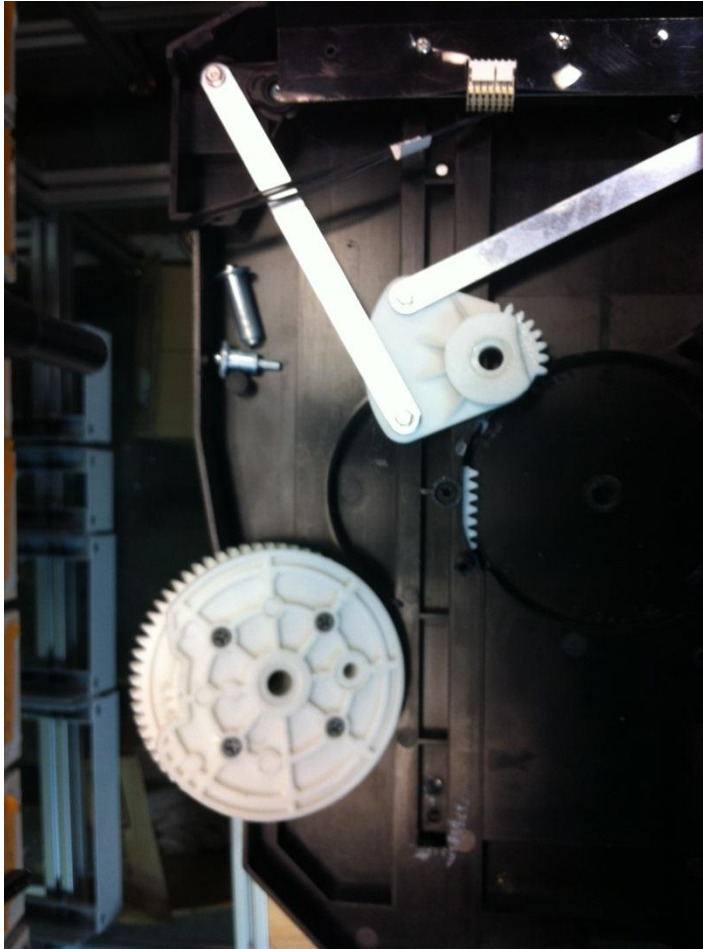
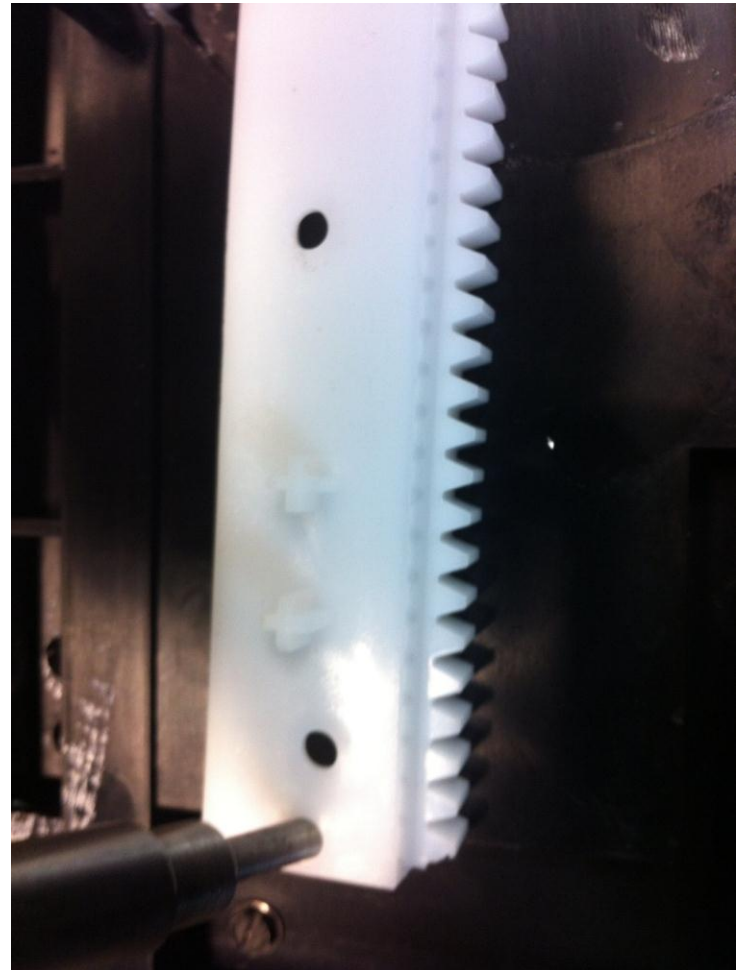


REMOVE THREE SCREWS HOLDING ON GEAR PLATE AND REMOVE AXELS AND GEARS LOCKING BIN AND FLAPS IN PLACE. THIS WILL ALLOW YOU TO MOVE THE BIN AND DOOR WHERE THEY HAVE TO BE



LOCK BIN IN PLACE BY STICKING A .190 DIAMETER PIN (OR BOLT OR DRILL BIT OR SOMETHING SIMILAR) INTO THE BOTTOM HOLE OF THE SIDEWALL. IT WILL GO THROUGH THE SIDE WALL HOLE AND THROUGH THE BOTTOM HOLE OF THE GEAR RACK ATTACHED TO THE BIN AS SEEN ON THE RIGHT

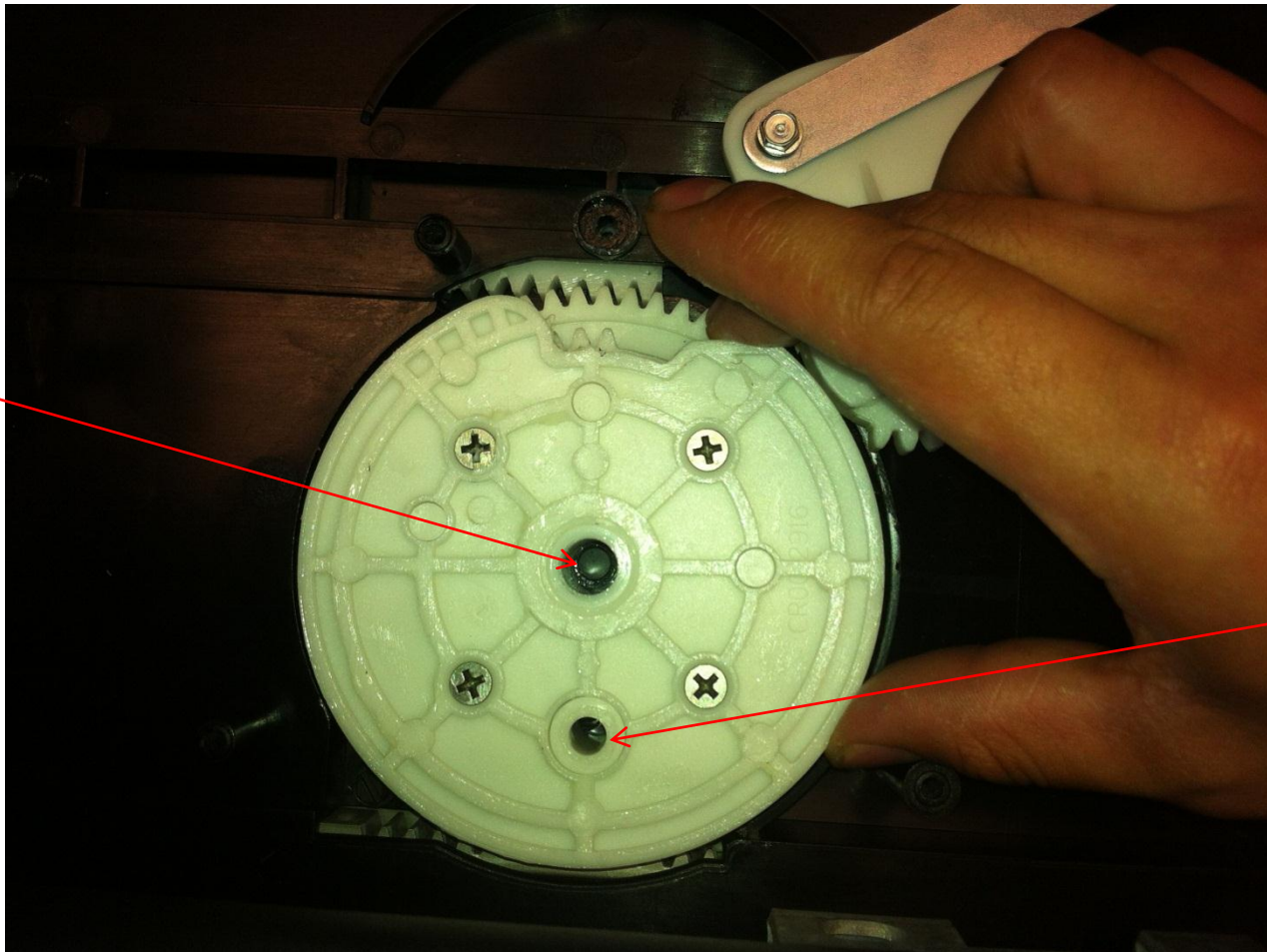


BEFORE ALIGNING THE GEARS, MAKE SURE THE DOOR ON THE BIN IS ALL THE WAY IN THE UP POSITION. THIS WILL ENSURE THE CORRECT STARTING PLACE WHEN THE BIN IS IN IDLE POSITION.



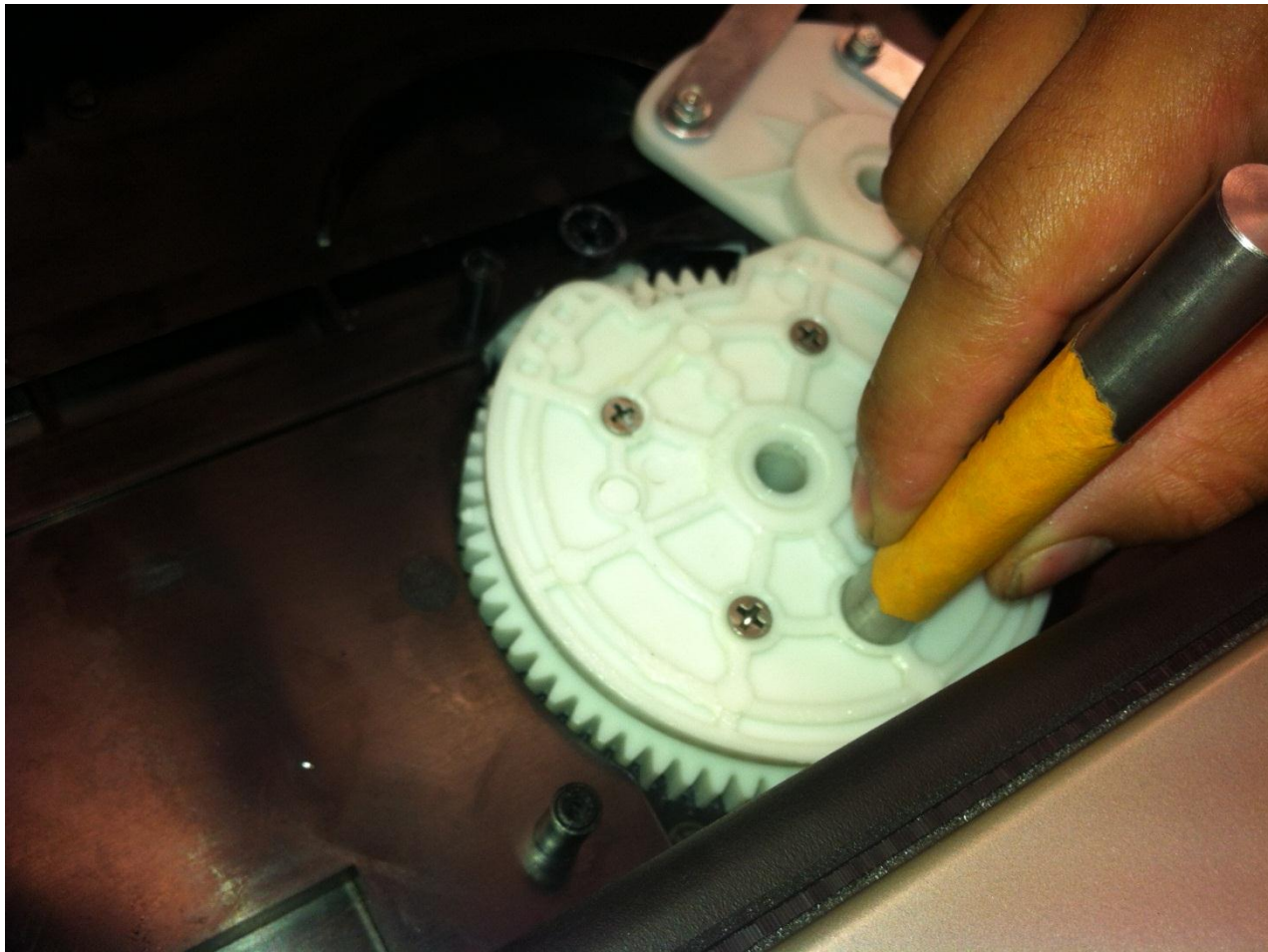
NEXT, SEAT THE GEAR AND CAM ASSEMBLY WHERE IT WAS BEFORE REMOVING IT. TRY TO LINE UP THE TWO HOLES ON THE GEAR WITH THE TWO HOLES ON THE SIDE WALL IT MOUNTS TO AS BEST YOU CAN, BUT DON'T TRY TO GET IT PERFECT. MAKE SURE THE TEETH OF THE GEAR ENGAGE THE BIN GEAR RACK AND THE DOOR GEAR RACK.

TRY TO SOMEWHAT
ALIGN BEFORE SEATING



TRY TO SOMEWHAT
ALIGN BEFORE SEATING

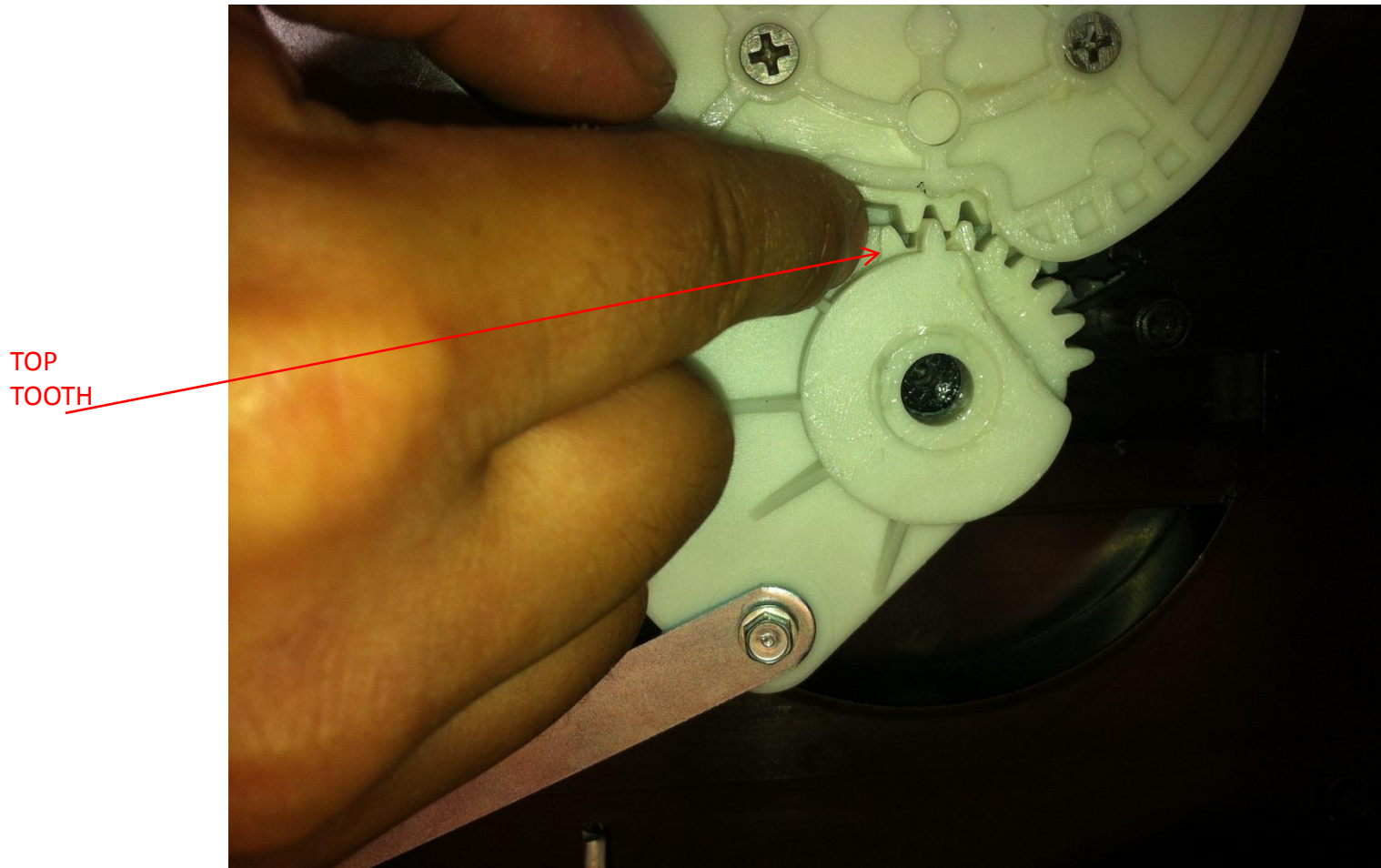
TO PROPERLY ALIGN GEAR WITH DOOR RACK, STICK A PIN OR SCREW (WITH .25" DIAMETER) THROUGH SMALLER OF TWO HOLES AND BE SURE IT SITS IN HOLE ON SIDE WALL. IF IT DOES NOT INITIALLY ALIGN WITH WALL, ADJUST THE GEAR BY LIFTING UP FROM SEATED POSITION AND MOVING ALONG GEAR RACK OF DOOR UNTIL PIN FALLS INTO PLACE. BE SURE DOOR IS IN UP POSITION WHEN ADJUSTING!!



NEXT, PLACE GEAR AXEL THROUGH SECOND HOLE TO LOCK GEAR IN PLACE. IF IT DOES NOT SIT IN SIDE WALL MOUTING HOLE INITIALLY, ADJUST THE TEETH ENGAGEMENT BETWEEN THE GEAR RACK OF THE BIN AND GEAR/CAM ASSEMBLY. WHILE DOING THIS, BE SURE TO HOLE THE PIN/SCREW IN PLACE SO THE ALIGNMENT BETWEEN THE GEAR/CAM AND DOOR GEAR RACK ARE NOT COMPROMISED.



ONCE GEAR/CAM IS ALIGNED AND LOCKED IN PLACE, PLACE CAM LINK NEXT TO GEAR AND ALIGN TEETH SO THE TOOTH ON THE GEAR LINK IS AT THE TOP OF THE ENGAGEMENT.



ENSURE VANDAL FLAPS ARE IN THE DOWN POSTION, THEN LOCK CAM LINK IN PLACE BY PLACING AXEL THROUGH HOLE. REMOVE BIN AND GEAR/CAM ALIGNMENT PINS AND ATTACH GEAR PLATE WITH THREE SCREW TO SECURE PARTS.



ONCE BOTH SIDES ARE ALIGNED, SIT BIN ASSEMBLY UP RIGHT AND CHECK SIDE WALLS TO ENSURE THE GEAR RACK HOLE IS ALIGNED WITH THE SIDEWALL HOLE AND THE GEAR/CAM HOLE IS ALIGNED WITH HOLE IN GEAR PLATE. IF NOT REPEAT PROCEDURE ABOVE.

